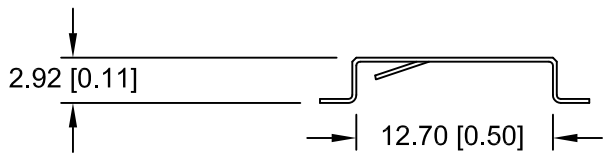
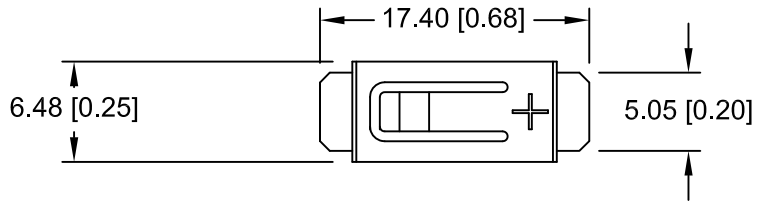
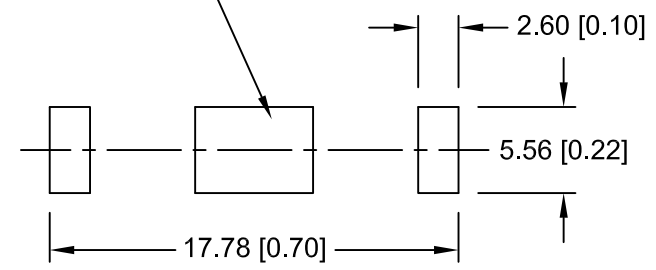


Date	SYM	REVISION RECORD	AUTH	DR.	CK.
08/22/16	A	UPDATED NOTE FOR NEGATIVE CONTACT UPDATED TO ROHS 2 COMPLIANT	T.B.	B.S.	
09/02/16	B	UPDATED SHAPE OF POSITIVE CONTACT TAB	T.B.	B.S.	
12/16/16	C	ADDED BATTERY TABLE	T.B.	B.S.	
01/06/17	D	REMOVED DIM. 1.12 UPDATED SPECIFICATIONS	T.B.	B.S.	



NEGATIVE CONTACT PAD
NICKEL OR GOLD PLATED
RECOMMENDED




PCB LAYOUT

NOTES:

- * Material- 0.25mm Phosphor Bronze, Nickel plated.
- * Vibration test: 10-50-10 hz swept in 60 seconds
x,y,z direction: 1 hour each direction
- * Result: no dislodgement of the cell or damage
no discontinuity over 10 micro-seconds
- * Shock test: half sine wave acceleration 150g.
6 ms 1 shock pulses each direction per axis
- * Result: no evidence of physical damage
- * Drop Test: Mounted on board and dropped 1 time per direction
from 1m high to wooden floor
- * Result: No dislodgement of the cell, No damage to the holders
- * Approximate weight: 0.48g
- * ROHS 2 COMPLIANT

CELL SIZE	RETAINS BATTERY NUMBERS
12.5mm	BR1220, BR1225, CR1220, CR1225

Tolerance (Except as noted)	 Memory Protection Devices, Inc 200 Broad Hollow Road, Farmingdale, New York 11735	Scale	Drawn By B.S.
			Approved By T.B.
decimal ±.5 (.020)	Title CR1225 BATTERY STRAP, SMT		
Fractional ± .8 (.030)	Date 01/06/17	Drawing Number BC-2009	
Angular ± 3°			