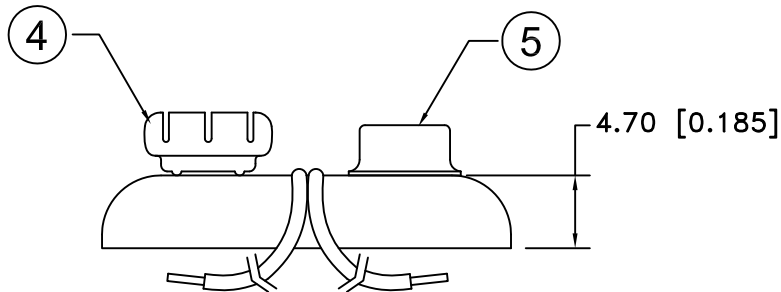
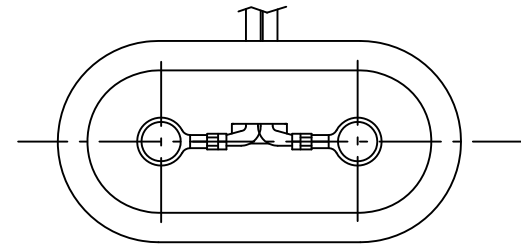


| Date | SYM | REVISION RECORD | AUTH | DR. | CK. |
|----------|-----|-----------------------------|------|------|-----|
| 5/26/07 | A | ADDED "ROHS COMPLIANT" | T.B. | B.S. | |
| 10/03/14 | B | UPDATED TO ROHS 2 COMPLIANT | T.B. | B.S. | |
| | | | | | |
| | | | | | |



NOTES:

1. T STYLE 2 PCS. MOLDED CASE CONSTRUCTION WITH CRIMP CONNECTIONS. CRIMP ON WIRE INSULATION AND ON WIRE PROVIDES STRAIN RELIEF THAT STANDARD SOLDERED SNAPS DO NOT HAVE.
2. ROHS 2 COMPLIANT

| NO. | PART NAME | MATERIAL | QTY. | Tolerance (Except as noted) | | MPD Memory Protection Devices, Inc 200 Broad Hollow Road, Farmingdale, New York 11735 | Scale | Drawn By B.S. |
|-----|---------------|--|------|--------------------------------|------------|--|------------------|---------------|
| | | | | decimal | Fractional | | | |
| 1 | MOLDED CASE | 2 PCS., POLYETHYLENE, WHITE WITH BLUE INSERT | 1 | ±.5 (.020) | ±.8 (.030) | Title 9 VOLT BATTERY SNAP-T STYLE-12" WIRE LEADS, MOLDED CASE | Approved By T.B. | Date 10/03/14 |
| 2 | BLACK WIRE(-) | 24 AWG OR 26 AWG, UL-1007, CSA TR-64, 300V, 80°C | 1 | | | | | |
| 3 | RED WIRE (+) | 24 AWG OR 26 AWG, UL-1007, CSA TR-64, 300V, 80°C | 1 | | | | | |
| 4 | FEMALE SNAP | BRASS, NICKLE PLATED | 1 | | | | | |
| 5 | MALE SNAP | BRASS NICKLE PLATED | 1 | | | | | |
| | | | | Angular | ± 3° | Drawing Number | BS12T-MC | |